

le parallèle est devenu oblique

Jeremy Sagala
2008

Alto Saxophone
Piano
Optional Electronics

NOTATION.

♯ = 1/4 tone sharp

♭ = 1/4 tone flat

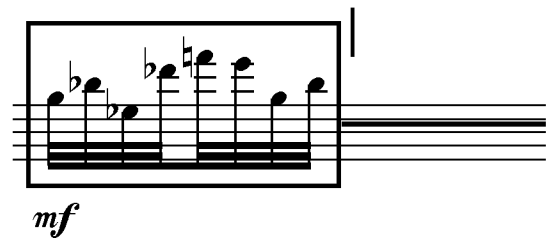
♯♯ = 3/4 tone sharp

♭♭ = 3/4 tone flat

↑, ↓ = just slightly sharp or flat, respectively

All accidentals are valid until the next vertical beat line (see below).

∅ = as quietly as possible (usually >∅ meaning "diminuendo to nothing")



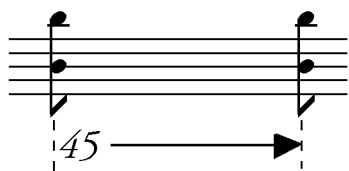
Play these notes in random order, as fast as possible. Occasionally displace one or two pitches by an octave, creating a slight accent.

RHYTHMS.

Vertical lines above the saxophone and piano parts indicate the passage of 1 second of absolute time. The proportional placement of notes within this space directly correlates to their placement of attack within that time. Occasionally, usage of traditional notation appears within this system (ie. flagged/beamed eighth notes, triplets, etc.) and the overall beat should be understood to be ♩=60.

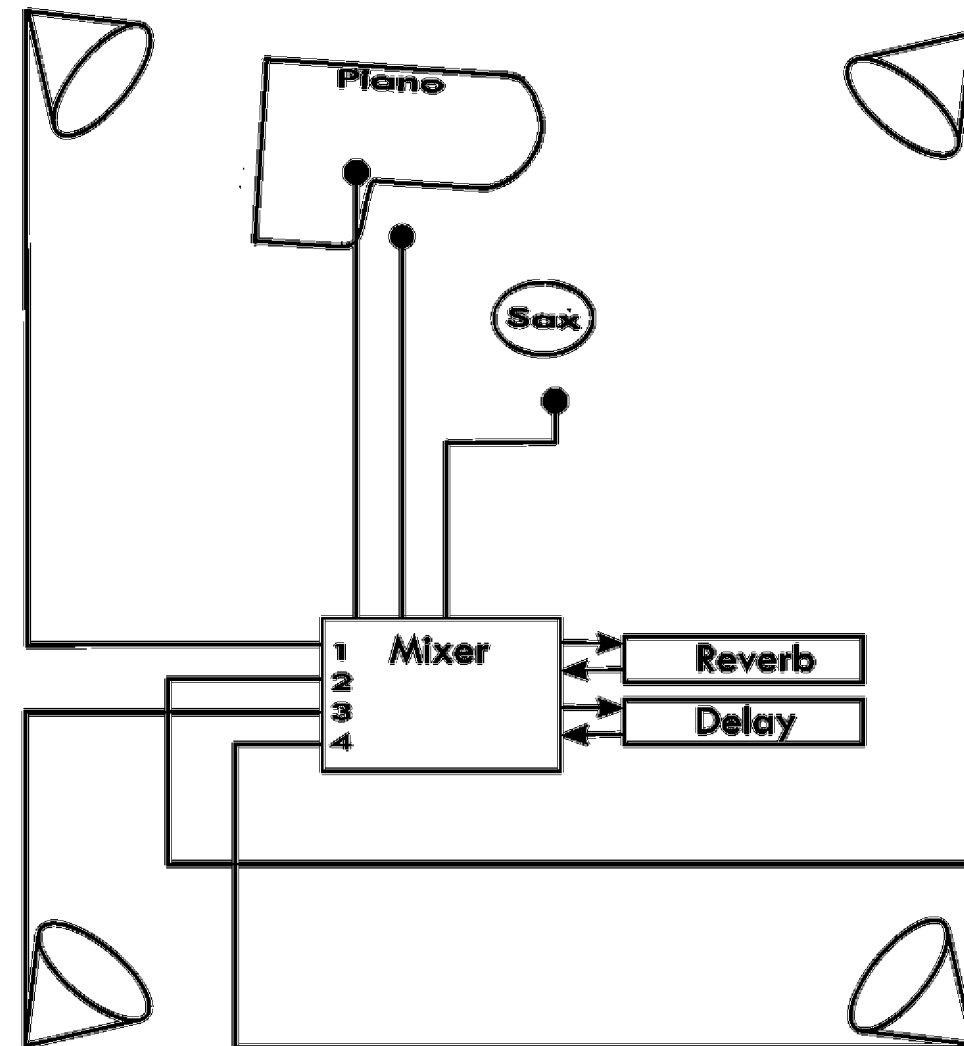
Longer spaces of time (more than one second) are measured in whole seconds and are indicated by: | 2" →

Sub-pulses are indicated using a number (bpm) and vertical dotted lines to show their placement within the absolute time grid:



The attacks in this example occur as if quarter notes at ♩=45.

ELECTRONIC SCHEMATIC.



The use of the indicated electronic equipment is highly recommended, though ultimately optional. Two microphone should be positioned in such a way as to capture a natural piano sound, and a third used to capture the saxophone. Each instrument should be bussed to allow individual control of the two effects.

The reverb patch should be set for a medium density ambience, with a decay of about one second. The delay patch should be set for 500ms. Effects should be routed through all four speakers, balanced for the performance space.

le parallèle est devenu oblique

JEREMY DAVID SAGALA
2008

A 1 **A 2**

60" 3"

Alto Saxophone

Piano.

f *p* *pochiss.* *mf* *p* *mp*

sus. Reverb Piano: 50% X sus. Sax: 50%

Electronics Delay Piano, Sax: off Piano: 50% → ∅

A 3

Sx. *ppp* *pp* *pp* *p* *subtone* *pp* *p*

Piano. *f* *p* *mf* *p* *mp* *pp* *p*

Reverb X sus.

Elec. Delay

Sx. *bend* 4" *full tone* *fz > pp* *f* *f* *fff*

Piano. *mf* *ff* *p* *ff*

Elec. Reverb

Delay Piano: 50% → ∅

X sus.

Sx. *subtone* *mp* *3* *full tone* *p* *mp*

Piano. *p* *mp* *mf* *p* *mf*

Elec. Reverb

Delay Piano: 50% Sax: 50% → ∅

X

A 5 **B 1**

Sx. *f* *fff* *f* *mp* *p*

Piano. *f* *mf* *p* *pp* *ppp* *p*

sus. X sus.

3" 4"

Elec. Reverb Piano:90%

Delay

50%

B 2

Sx. *mf* *f* *ff* *mf* *ff* *f* *mp*

Piano. *fff* sus. X sus.

5:4

alternate fingering

3

Elec. Reverb X sus.

Delay

B 3

alternate fingering and/or 1/4 tone trill

Sx. *p* *pp* *mf* *p* *pp* *mp*

Piano. *f* *p* *p* *f*

Reverb **X sus.**

Elec. Delay

C 1

legato

Sx. *mf* *mp* *p* *p*

Piano. *mf*

Reverb **X**

Elec. Delay **Sax:75%**

alternate fingering

bend note up a major second near end

Sx.

mf mf f p ff mp ff p

5

tr

3" C 3 subtone

8:6

Elec.

Reverb Sax: 75%

Delay

Sx.

2" 7" 3" C 3 subtone

mf p mf mp p mf p mf

full tone slight rallentando a tempo

subtone full tone subtone full tone

Sx.

3" C 3

f ff

full tone

3:2

Oct. ●●●●●●●●
Sk ●●●●●●●●
E ○

D 1

2"

D 2

Sx. *as fast as possible*

fff

mp

steady rhythm

ff

mp

Reverb sus. Sax:30%

X sus. →

Delay

D 3

Sx. *pp* *mp* *mp* *p* *mp*

subtone

Piano.

5 5 5 6 6

Reverb

Elec.

Delay

Piano: ∅

D 4

Sx. *mp* *mf* *pp* *mp pp* *mp pp* \emptyset

Piano. *mf*

Reverb SUS. →

Elec. Delay → 50%




Sx. *pp* *mp pp* *mp* *pp* *mp* *subtone* *6*

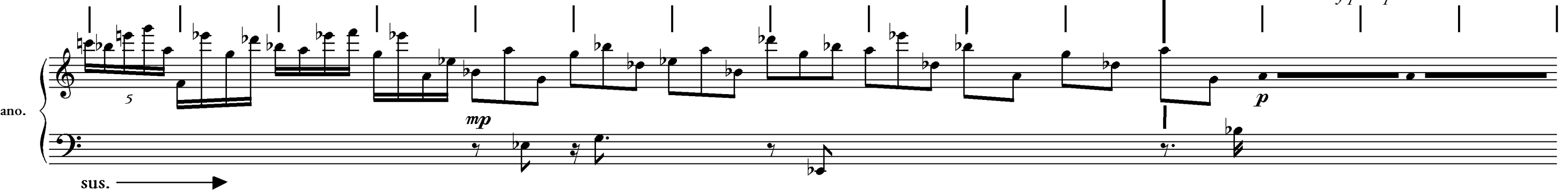
Piano. *7* *7* *6* *6* *5*

Reverb

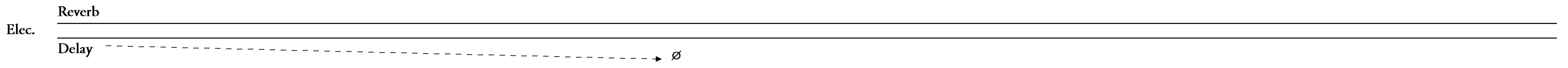
Elec. Delay

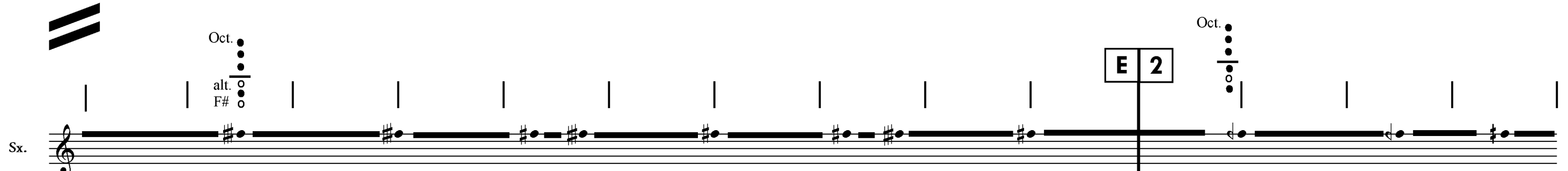
Piano: -----

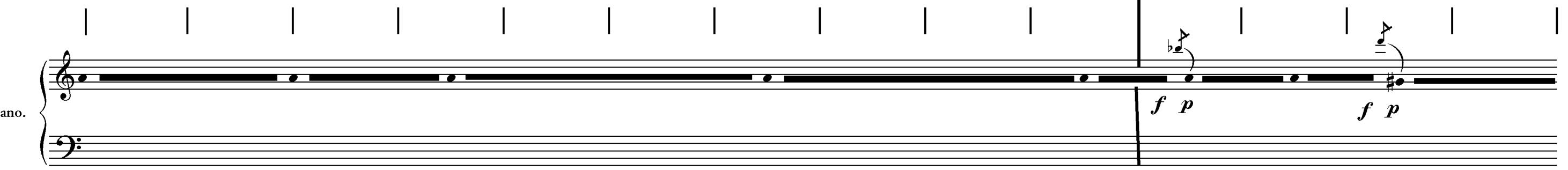
Sx. 

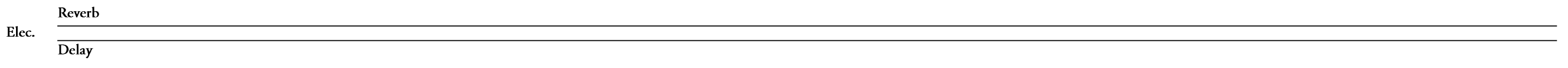
Piano. 

attacks should be barely perceptible

Elec. 

Sx. 

Piano. 

Elec. 

E 3

Sx. *mp* *pp* *mp*

Piano. *mp* *p* *mp* *p* *mp*

Reverb sus. →

Elec. Delay Piano: 75%

E 4

F 1

sharp, loud, aggressive!

full tone

Sx. *pp* *pochiss.* *f*

Piano. *mf* *p* *ff* *f* *mp* *pp* *f*

X sus. →

X

Elec. Reverb Delay

F 2

Sx.

Piano.

5:4

mp *f*

ff *f*

sus. X

Elec.

Reverb

Delay



F 3

Sx.

Piano.

subtone

sub. *pp*

ff *f*

full tone

f *mp*

sus.

X

Elec.

Reverb

Delay

alternate multiphonic with short trills by lifting RH middle finger (F# key)

F 4

Sax. *f* *ff* *f* *tr* *tr* *tr* *tr*

Piano. *ff* *p* *ff* *mf*

sus. X sus.

4" 6"

Reverb

Elec. Delay



F 5

Sax. *tr* *mp*

Piano. *fff* *mp* *mf* *mp* *mf*

X sus. X sus. →

3 5 8

Reverb

Elec. Delay

Piano: 25% Sax: 75%

F 6

Sx. *mf* *pochiss.*

Piano. *mp* *mf* 5:4 3

Elec. Reverb
Delay

F 7

Sx. *mp* *alternate fingering*

Piano. *sus.*

Elec. Reverb
Delay

F 8

Sx.

Piano.

Elec. Reverb
Delay



F 9

Sx.

Piano.

Elec. sus. →
Reverb
Delay

G 1

6"

Sx.

Musical notation for Saxophone in the G 1 section. Dynamics include *f*, *mf*, *f*, *mp*, *f*, *mp*, and *mf*. A 6-second time signature is indicated above the staff.

Piano.

Musical notation for Piano in the G 1 section. Dynamics include *f*, *mf*, and *mp*. Includes a double bar line with a repeat sign.

X sus.

Reverb

Elec.

Delay

Piano: -----> ∅

Sax: -----> ∅



G 2

G 3

Sx.

Musical notation for Saxophone in the G 2 and G 3 sections. Dynamics include *mp*, *p*, *p*, *p*, and *pp*. Includes the instruction "blend with piano" and "full tone".

Piano.

Musical notation for Piano in the G 2 and G 3 sections. Dynamics include *pp*, *p*, and *mp*. Includes a double bar line with a repeat sign.

X sus.

Piano: 75%

Sax: 75%

Reverb

Elec.

Delay

Sx. **G 4**

3" *fp* *f* *p* *mp* *ff*

Piano. *mp* *p* *f* *mf*

X sus. X sus.

Reverb

Elec.

Delay Piano: 50%

Sx. **G 5** **G 6**

2" *mp* *ff* *p* *mp* *p* *mf* *mp* *mf* *mp*

quick bend/gliss. up to pitch

subtone 3

Piano. *p* *mf* *mf* *mp*

X sus.

Reverb

Elec.

Delay $\rightarrow \emptyset$

pk
D, Eb, F sk
E

H 1

Sx.

Staff with notes, dynamics *pp*, *p*, and a *subtone* marking.

Piano.

Staff with chords, dynamics *mp*, *p*, and a *sus.* marking.

Elec.

Reverb
Delay
Piano: 50%



H 2

Sx.

Staff with notes, dynamics *p*, and a *sus.* marking.

Piano.

Staff with chords, dynamics *mp*, *p*, and a *sus.* marking.

Elec.

Reverb
Delay

Sx. H 3

Piano.

Reverb

Elec. Delay Piano: 50%

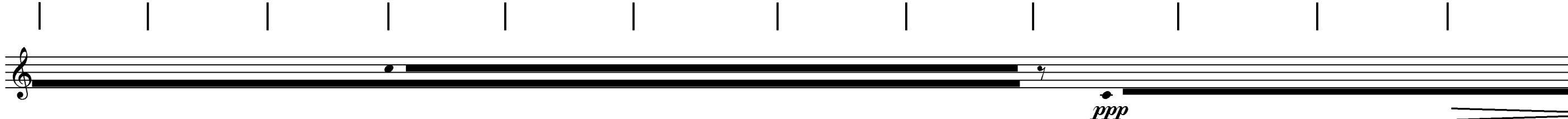
Sx. H 4

Piano.

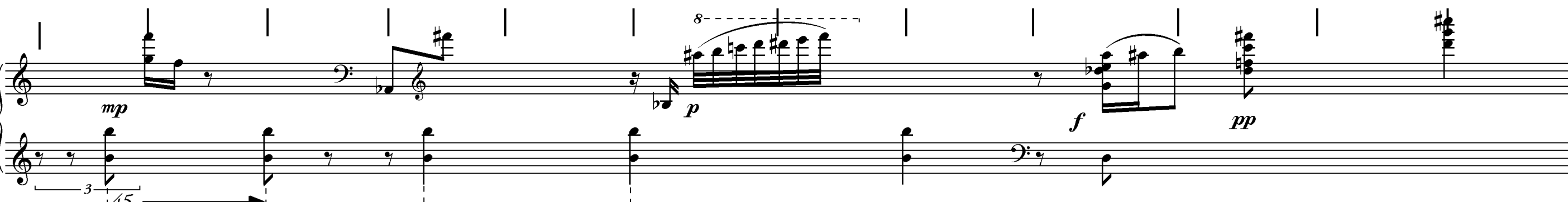
Reverb

Elec. Delay Sax: 90%

Sx.



Piano.

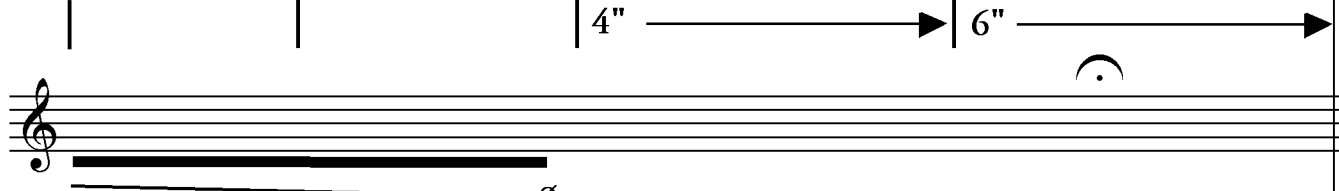


Piano: 90%
Reverb

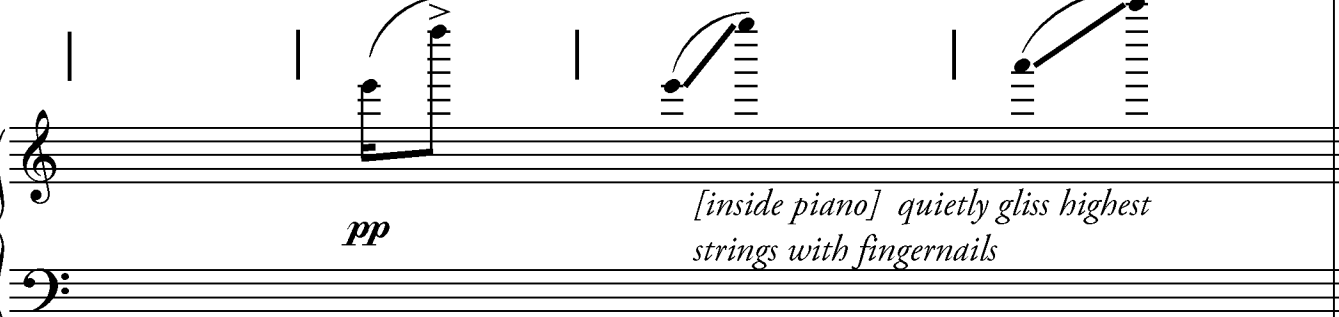
Elec.

Delay

Sx.



Piano.



pp [inside piano] quietly gliss highest strings with fingernails

Elec.

Reverb

Delay